



THE

The official newsletter of PCC

BEAVER

BUZZ

Pratt Community College October 2023

Monthly Newsletter

Maximum Student Learning

Individual & Workforce
Development

High Quality Instruction
& Service

Community Enrichment

Contents

Early Enrollment - Spring 2024	1
Important Dates	2
Student Spotlight	3
PCC Rodeo Team Jackpot	4
Constitution Day	5
Performing Arts Presents	6
Science Department	7
Delmar Riney Art Gallery	8
Student Life	9
Pratt CC Tech Day	10
Student Leadership Council	11
Phi Theta Kappa	11
Wrestling Hog Roast - Pratt Jam	12
Beaver Volleyball	13
Beaver Soccer	14
Photos	15
Annular Solar Eclipse	16
Spring 2024 Enrollment	17
Fall Intersession Classes	18

Call for upcoming newsletter content

If you have information or ideas for new content, fun facts, or PCC trivia, send them to Marketing for inclusion in the next newsletter

>>> marketing@prattcc.edu

Early Enrollment Spring 2024

Pratt Community College is opening early enrollment for Spring 2024 on October 10, 2023. See your advisor early to get the best class selection.

Current students can get a jumpstart registering for classes by scheduling an appointment with their advisors. New students can visit with our admissions team and apply for admissions at prattcc.edu/apply to get started.

Pratt Community College can help you no matter where you're starting. We have so much to offer! We'd love to welcome you to PCC, let us show you what's possible.



Quote of the Month

EDUCATION is the
MOST POWERFUL WEAPON

• • • • which you can use to • • • •

CHANGE THE WORLD

- NELSON MANDELA

PRATT COMMUNITY COLLEGE does not discriminate on the basis of race, color, national origin, sex, disability, age or veteran status in its programs and activities. Complete notice can be found at <http://prattcc.edu/notice>

October 2023

Important dates

Mid-Term Week
October 2-6th

Fall Break No Classes/Faculty Work Day
October 9th

Early Spring 2024 Enrollment Begins
October 10th

**Current Student Advising Day -
No Classes/Faculty Work Day**
October 18th

Rodeo at OSU - Stillwater, OK
Oct 19th, 20th & 21st

Performing Arts presents
"Matilda The Musical" in Carpenter Auditorium
October 27th @7:30, 28th @7:30 & 29th @2:30
Dinner Theatre - Oct 28th @6:30 email
mistyb@prattcc.edu for reservations.

Rodeo at NWOSU - Alva, OK
Oct 26th, 27th, & 28th

NOVEMBER A LOOK AHEAD

HLC Accreditation Visit
November 13-14th

PCC Tech Day
November 16th

Performing Arts Choir & Jazz Band Concert
October 19th @ 2:30pm

Thanksgiving Break - No Classes
November 22-23rd



STUDENT SPOTLIGHT



Yuri Ribeiro



Yuri Ribeiro is a Sophomore at Pratt Community College. He joins PCC from Jundiaí, Brazil and his major is Sports Science. Yuri is on the Pratt CC Men's Soccer team and is this year's team captain. Yuri is also this semester's Student Manager of the Beaver Bites Café. Students train early in the semester to help run operation at Beaver Bites, under the direction of James Lemon. "What brought me to Pratt was the opportunity to continue playing soccer, get a degree and learn a new language. Working in Beaver Bites has brought me many friends and amazing experiences" - Yuri.



PCC RODEO TEAM

JACKPOT



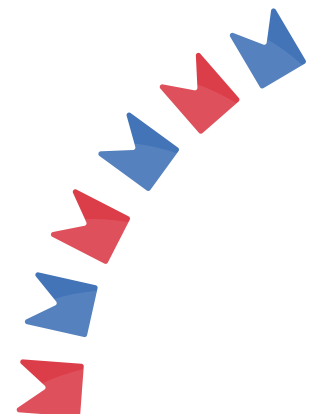
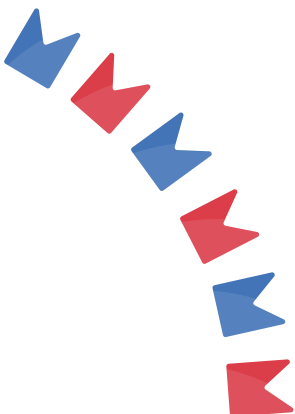
Our PCC Rodeo team has hit the ground running this semester with numerous events already in the books. On September 20, 2023 they hosted a inter-squad jackpot on campus at the Herb Huffman Arena. The event was open to the public and was well attended. Our Student Life Department partnered with the Rodeo team to assist with multiple aspects of the night. During the month of October, our Rodeo team has a couple of busy weekends. Including events at OSU - Stillwater, OK on Oct 19, 20, and 21 & NWOSU - Alva, OK on Oct 26, 27, and 28. We are proud of this group and wish them good luck.



CONSTITUTION DAY

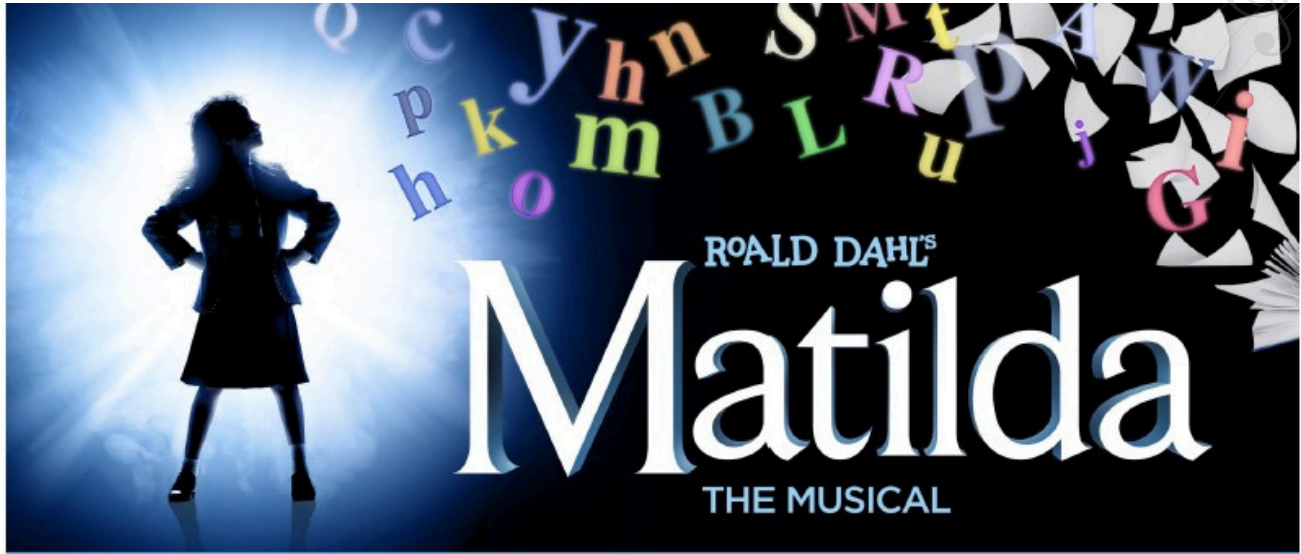
Constitution Day commemorates the formation and signing of the U.S. Constitution by thirty-nine brave men on September 17, 1787, recognizing all born in the U.S. or by naturalization, have become citizens. On Constitution Day, September 17, the United States pauses to commemorate the drafting of its Constitution.

We invited all members of the Pratt Community College community to join us in reflecting on its historical and contemporary significance. On Monday, September 18th, Pratt Community College celebrated constitution day by displaying thoughts of the importance of the constitution written by our faculty and staff and provided treats for all who attended in the Linda Hunt Memorial Library on campus.

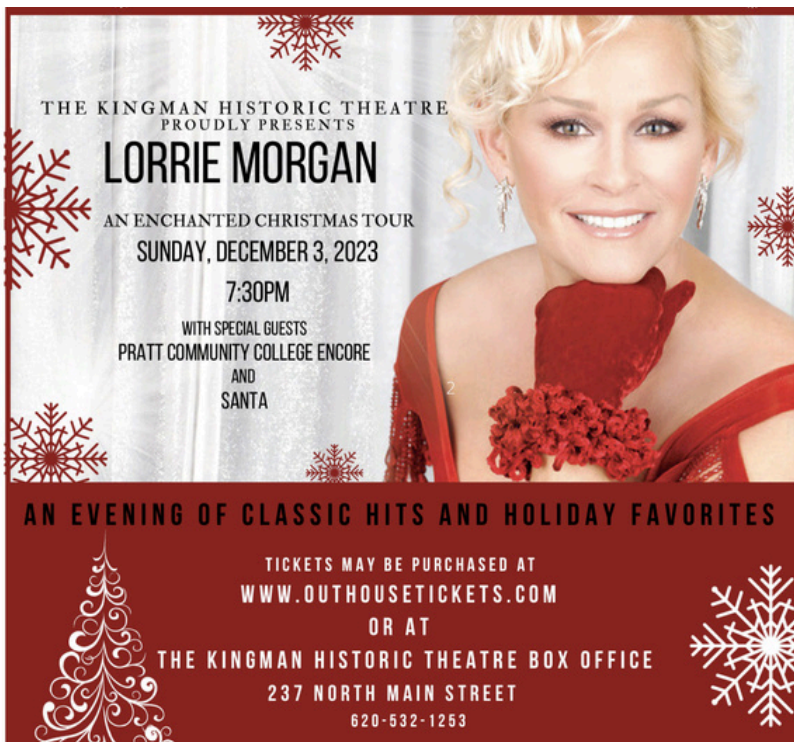


PCC PERFORMING ARTS PRESENTS

Be sure to catch "Matilda the Musical" October 27-29th at Pratt Community College. Tickets are \$5 at the door. Show times: October 27 at 7:30pm, October 28 at 7:30pm and October 29 at 2:30pm. Saturday's performance will also include a dinner theatre option at 6:30pm. Tickets for dinner and the show are \$15 and reservations are required. Please email mistyb@prattcc.edu for more details.



The Performing Arts department will finish off the semester with a Choir & Jazz Band Concert on November 19 at 2:30pm and our traditional Christmas to Remember show on December 1st and 2nd at 7:30pm. We will not be having our usual Sunday afternoon showing of the Christmas show due to a special event.



The Performing Arts Department is pleased to announce that Encore will have the opportunity to sing with Grand Ole Opry member Lorrie Morgan on December 3, during her Christmas show in Kingman, KS.

This is an extremely cool opportunity for our students. Tickets for the show are going fast, so if you are interested in joining us please visit www.outhousetickets.com or at the Kingman Historic Theatre box office.

The Kingman Historic Theatre is a great partner with our program and they are doing some fun things in their community!

SCIENCE DEPARTMENT

Environmental Science Stream Project

On September 21, 2023, Mr. Chambers' Environmental Science class participated in a field trip to Lemon Park to evaluate the ecological integrity of a short stretch of the South Fork Ninnescah River. Students were led through various activities by Mr. Chambers, and Ryan Waters. Waters is a Kansas Department of Wildlife and Parks (KDWP) biologist that leads stream evaluations in Kansas watersheds throughout the state.

Students assessed the biological communities of the river by sampling fish using electroshocking techniques and collecting macroinvertebrates using dip nets. In addition to sampling fish and macroinvertebrates, students conducted a habitat survey and performed basic water chemistry tests to help them evaluate the overall condition of the river.

The project is part of an ecology unit in the Environmental Science curriculum that allows students to work with KDWP biologists that monitor surface water quality in Kansas. This is the 21st year that this project has been conducted with the help of KDWP.

The biological, habitat and chemical assessment of the river provides students with a chance to gain a better understanding of the ecological integrity of the watershed. Students are currently working to interpret the data they collected and are writing a formal report summarizing their findings. These types of hands on experiencing are a valuable part of learning to recognize how organisms interact with one another and their environment which is a fundamental principle in ecology. Understanding how people interact with their environment and the impact they have on natural systems is what environmental science is all about. Thanks to Ryan Waters and KDWP for their continuing support of this project.



DELMAR RINEY ART GALLERY

FEATURED ARTISTS

KANSAS ART GUILD (KAG)

The Friends Community Art Guild was formed in May, 1977. The first meetings were held at Friends University with eight members present. Nona Bass, President, had just moved from Anaheim, California, to Wichita and was surprised to learn that there was no organization in Wichita for its local artists. She felt it was important that artists could meet and share ideas.

The Guild grew rapidly and soon moved to the Wichita Art Museum. At that time, the name was changed to the Community Art Guild. When the Wichita Art Museum underwent renovation, the Guild moved to the Wichita Center for the Arts, then in January 2018 they moved to the newly constructed Mark Arts | Mary R. Koch Arts Center, its present location.

In the summer of 1993, members voted to change the name to the Kansas Art Guild, Inc. At that time, it was decided to incorporate. The name is very appropriate since many of the members live many miles outside the Wichita Area.

Regular meetings are held at 1:00 PM on the first Tuesday of each month at Mark Arts in Wichita, Kansas. Members share their recent works which are judged by visiting speakers. The Guild also holds exhibitions at several locations in the area throughout the year.

The Guild's goal is to promote art and artists.

For more information about the Kansas Art Guild or to contact them, visit
www.kansasartguild.com

The exhibit will run from September 28 through November 15



STUDENT LIFE

Student Life is in full swing with events every week. Recent events included: Ultimate Frisbee, Fortnite Tournament, and an event, partnering with the PCC Rodeo team. Be sure to follow @PCCstudentlife on Instagram.



October Student Activities

October 12: The Amazing Race 9pm Lesh Arena

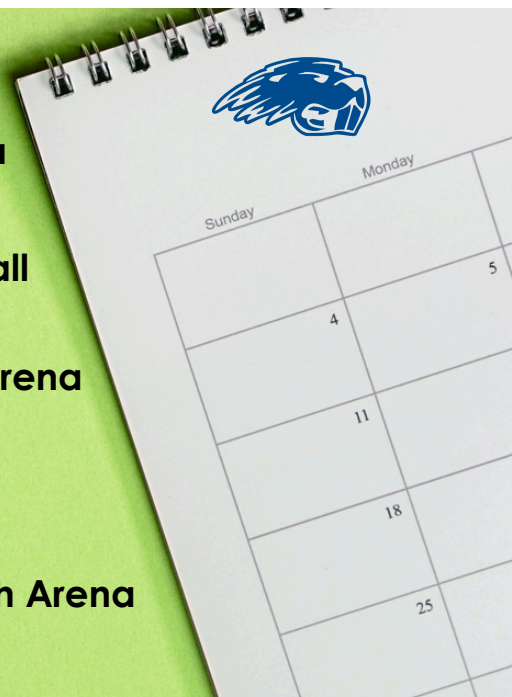
October 23-26: BEAVER FEAVER WEEK

October 23: Scary Movie Night 9pm Woj Hall
- PJ Day

October 24: Dodgeball & Snow cones 9pm Lesh Arena
- Country vs Country Club

October 25: Sophomore Day
- Blue Out

October 26: Late Night in the Lesh 8:45pm Lesh Arena
- Twin Day





PRATTCC TECH DAY

November 16, 2023 | 9:00am - 1:00pm

EXPERIENCE THESE PROGRAMS:

Agriculture
Agriculture Power Technology (Diesel Mechanics)
Allied Health
Automotive Technology
Business & Accounting
Electrical Power Technology (Linemen)
Electrical Power Technology (Support Specialist)
Information Network Technology
Welding Technology
Wildlife Outfitting & Operations

**REGISTER
TODAY!**



ADDITIONAL OPPORTUNITIES

- Meet fellow incoming students
- Speak directly with PCC faculty and staff
- Hear from current students

Chance to win Beaver gear!

**Lunch
provided!**

Register at prattcc.edu/techday

For more information, email
pccadmissions@prattcc.edu
or call 620-450-2217

PRATT 
Community College



STUDENT LEADERSHIP COUNCIL

September's Student Leadership Council group was the Resident Assistants. There were six students who met with President's Cabinet to share their key issues and processes impacting students. The group and Cabinet met on September 25th, for a luncheon and discussion on topics relating to students needs and positives they have seen here at PCC since they have been on campus this semester.




PHI THETA KAPPA

Per the American Red Cross, the need for blood is constant and only volunteer donors can fulfill that need for patients in every community. Nationwide, someone needs a unit of blood every 2 to 3 seconds and most of us will need blood in our lifetime.


PCC's Phi Theta Kappa Honor Society does their part every year to help fulfill the need. PTK will host their annual blood drive on Thursday, October 19, 2023 on campus inside Dennis Lesh Arena from 8:30am to 2:30pm.

Appointments can be made online through the Red Cross website, by calling the Red Cross at 1-800-733-2767 or by contacting PTK sponsor Jason Ratcliffe at jasonr@prattcc.edu


Please consider making an appointment or signing up to volunteer for the blood drive to continue the success of meeting the yearly goals for blood donation in the Pratt community.



PHI THETA KAPPA
HONOR SOCIETY



PRATT
Community College





**DONATE
BLOOD
SAVE LIFE**

October 19, 2023

Pratt Community College
Dennis Lesh Sports Arena
8:30am - 2:30pm

REGISTER NOW!





American Red Cross

redcrossblood.org

Download
the
Blood
Donor
App today!

SINCE 1938

HOG ROAST

FUNDRAISER



OCTOBER 14TH

AMERICAN LEGION POST 86 5:30 PM



UNDER ARMOUR.

DINNER RAFFLE AUCTION

YETI

FREE DINNER

\$20/5 RAFFLE TICKETS

\$5/1 RAFFLE TICKET

HOSTED BY:

**PRATT
WRESTLING**

MORE
SPONSORS
TO COME!



RSVP: KEN KEPLEY

704-467-3465 kennethk@prattcc.edu

COME
AND
SEE US!



SATURDAY, OCTOBER 14
SIXTH STREET PARK

10:00AM-12:00PM TRAIN RIDES

10:00AM-11:00AM YOGA IN THE PARK

11:00AM-12:00PM DOG WALK & STROLLING THE PARK

12:00PM - 11:00PM BEER & WINE GARDEN/FOOD TRUCKS

12:00PM-5:00PM ART & VENDOR FAIR

CAR SHOW & KIDS' ACTIVITIES (BOUNCE HOUSE, FACE
PAINTING, PUMPKIN PAINTING)

12:00PM-6:00PM DJ WITH MUSIC, GAMES, & CONTEST

1:30PM-3:00PM DOGS' DAY OUT & ADOPTION

(PRATT HUMANE SOCIETY)

5:30PM PCC WRESTLING HOG ROAST

7:00PM - 10:00PM LUCKY PEOPLE BAND



BEAVER VOLLEYBALL

The Beaver volleyball team hosted a triangular tournament on October 2 with Bethany College (JV) and Friends University (JV). Both matches resulted in a win for the Beavers. Pratt will return to conference play on Wednesday, October 4, hosting Butler at home at 6:30 PM.

Bethany College (JV) Recap

In the match between our ladies and Bethany College (JV), PCC emerged as the victors with a final score of 3-1.

Alyssa Hunter was a standout player for PCC, scoring 16 kills and contributing a total of 19.5 points. Baylee Brin also had an impressive performance with 7 kills and a total of 9.5 points.

Our Beaver volleyball team had a strong offensive performance. The individual matches scored as follows, 25-17, 25-10, 20-25, and 25-14. Bethany College (JV) put up a tough fight, but ultimately fell short.



Friends University (JV) Recap

The PCC ladies dominated the opening match, winning with a score of 25-8. They continued their strong performance in the second set, defeating Friends University (JV) with a score of 25-12. The final set showcased Pratt Community College's dominance once again, as they secured a 25-14 victory, to clinch the match.

PCC displayed an impressive offensive performance. They recorded a hitting percentage of .458, with a total of 38 kills out of 72 attempts. Alyssa Hunter was a standout player for Pratt Community College, contributing 12 kills with a remarkable hitting percentage of .706. Baylee Brin also made a significant impact, recording 9 kills with a hitting percentage of .412.

The PCC volleyball team's strong serving game was also evident, with a total of 16 service aces. Tessa Bender led the team with 8 service aces, while Rylie Hallman contributed 3 aces along with 32 assists.

Defensively, Pratt Community College displayed solid performances as well. Lizzy Cisneros led the team with 4 digs, while Baylee Brin and Rylie Hallman each contributed 5 digs.

#DefendtheDam

BEAVER SOCCER



In a recent soccer match between Hesston College and Pratt Community College, Pratt emerged victorious with a dominant 4-0 win. The game, held on October 4, 2023, showcased Pratt's offensive prowess and solid defensive play. Let's delve into the details of the match and the standout performances from both teams.

Pratt Community College displayed an impressive offensive performance throughout the game. They wasted no time in taking the lead, with Gustavo Dias Juliani scoring an unassisted goal early in the first period. This set the tone for Pratt's attacking prowess. Lucas Barcelos and Jack McNamara also contributed to the scoring, with each player netting a goal assisted by their teammates. Thiago Durrer and Jack McNamara provided crucial assists, highlighting the team's excellent coordination and teamwork.

On the other hand, Hesston College faced difficulties in breaking through Pratt's defense. Goalkeeper Brandon Bumgarner also played a crucial role, making eight saves to keep a clean sheet for Pratt.

Pratt Community College's 4-0 victory over Hesston College showcased their dominance on both ends of the field. Their potent offense, led by Gustavo Dias Juliani, Lucas Barcelos, and Jack McNamara, overwhelmed Hesston's defense. Additionally, Pratt's disciplined defensive line, along with goalkeeper Brandon Bumgarner's exceptional saves, prevented Hesston from finding the back of the net. The match highlighted the skill and teamwork of both teams, making it an exciting contest for spectators.

The PCC Men's soccer team's record after the October 4th game is 4-6-1.

#DefendtheDam



ANNULAR **SOLAR ECLIPSE**

JOIN THE PRATT COMMUNITY COLLEGE STEM CLUB

**SATURDAY,
OCTOBER 14**



11:00 AM - 12:30 PM

**WE WILL GATHER IN FRONT OF
BENSON EDUCATION CENTER**

**SOLAR VIEWING GLASSES AND A SOLAR TELESCOPE
WILL BE AVAILABLE FOR SAFE VIEWING.**

PRATT 
Community College

PRATT COMMUNITY COLLEGE SPRING 2024

ENROLL NOW!

To enroll, please see your advisor or visit www.prattcc.edu/student-services/class-schedules

COLLEGE START

\$95

All Current High School
Students*

KANSAS RESIDENTS

\$127

All Kansas Residents

NON-KANSAS RESIDENTS

\$141

All Out of State Residents
Excludes International**

Tuition \$65 Fees \$30 Total \$95

Tuition \$70 Fees \$57 Total \$127

Tuition \$84 Fees \$57 Total \$141

An additional fee is required for non-Pratt County residents for each semester in attendance if enrolled in 12+ credit hours.

*High School Students must be a Sophomore, Junior, or Senior during the 2023-2024 Academic Year.

**International Students: Tuition \$110, Fee \$57, plus \$150 special fee per semester if enrolled in 12+ credit hours.

Spring Classes Begin January 10

EARN AS YOU LEARN SCHOLARSHIP

- HS sophomores, juniors & seniors can earn college tuition awards from PCC
- EAYL scholarship is awarded for A or B's earned in a College Start Class (up to 9 cr hrs/semester)
- EAYL scholarship can be used for fall, spring or summer upon HS graduation

prattcc.edu/collegestart

APPLY FOR FALL SCHOLARSHIPS

The 2024-2025 Scholarship
Application will be available soon.

- Academic, Athletic & Activity Scholarships
- Tuition & Books Scholarships
- Veteran Scholarships
- County, In-State & Honors Scholarships

prattcc.edu/scholarships

EDUKAN \$150

- Online Classes offered by Kansas Community Colleges
- Transferable credits
- Apply, enroll and pay Online!
- Additional resource fees may apply.

edukan.edu

FIND OUT MORE!

prattcc.edu • 620-450-2217

PRATT 
Community College

PRATT COMMUNITY COLLEGE

FALL INTERSESSION CLASSES

To enroll, please see your advisor or visit www.prattcc.edu/student-services/class-schedules

CONCEPTS AND APPLICATIONS OF THE EXERCISE SCIENCES

HPR 123 - PRATT ONLINE - 1E
12/13/23 - 01/03/24
3 CREDIT HOURS

This course presents key topics and current research in exercise physiology, biochemistry, anatomy, bio-mechanics, endocrinology, sport nutrition, and sport psychology and discusses applications for the design of safe and effective strength and conditioning programs. A physical education course that is designed to provide the student with a combination of lectures that are research-based and accurate of the essentials of strength and conditioning and extensive exercise techniques that will prepare the student for the CSCS, NSCA exams, and USAW Level 1 Sports Performance Coaching Course. This course is recommended for current/future athletes, teachers, coaches, administrators, officials and/or others involved in recreational or competitive activities and human performance.

PSYCHOLOGY OF SPORT

HPR 125 - PRATT ONLINE - 1E
12/13/23 - 01/03/24
3 CREDIT HOURS

The course provides an opportunity to become acquainted with the many psychological aspects that coaches, athletes, and spectators face in their involvement with sports. Emphasis will be given on the psychological and social dimensions of coaching, practice and competitive preparation, and on the psychological traits common to specific sports and athlete personality. Psychology of Sport is a physical education course designed to provide the student with an understanding of the issues related in sport today. This course is recommended for current/future athletes, teachers, coaches, administrators, officials and/or others involved in recreational or competitive activities and human performance.

COLLEGE START

\$95

All Current High School
Students*

KANSAS RESIDENTS

\$127

All Kansas Residents

NON-KANSAS RESIDENTS

\$141

All Out of State Residents
Excludes International**

Tuition \$65 Fees \$30 Total \$95

Tuition \$70 Fees \$57 Total \$127

Tuition \$84 Fees \$53 Total \$141

An additional fee is required for non-Pratt County residents for each semester in attendance if enrolled in 12+ credit hours.

*High School Students must be a Sophomore, Junior, or Senior during the 2023-2024 Academic Year.

**International Students: Tuition \$110, Fee \$57, plus \$150 special fee per semester if enrolled in 12+ credit hours.

FIND OUT MORE!

prattcc.edu/ • 620-450-2217

PRATT 
Community College