



CONTACT INFORMATION

prattcc.edu
Pratt | Wichita | Winfield | Coffeyville
348 NE SR 61; Pratt, KS 67124
620.672.5641
1.800.794.3091 (KS only)



PRATT Community College

**Electrical Power
Technology**
In association with
Westar Energy in Wichita

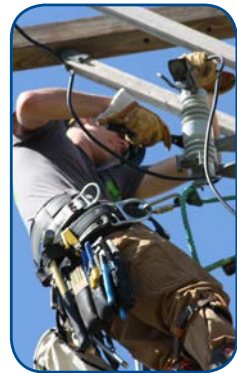
Pratt Community College offers one of the most comprehensive Electrical Power Technology Programs in the nation. One of only three in the state of Kansas, it offers students a variety of convenient ways to attend classes through on campus courses and on the job training. The program is offered at three locations: Pratt, Coffeyville and Wichita.

The EPT Programs have a 93 percent placement rating. Students are required to take part in a paid internship during the summer, which the instructors will help the students find one suited for them.

Pratt Community College is a comprehensive community college, providing general education as well as technical education and business and industry training. Students can transfer to a 4-year university or enter the workforce upon graduation.

Pratt's main campus is 70 miles west of Wichita located in Pratt, Kan. It was founded in 1938. PCC has an eLearning Center located in Wichita and offers general services and online courses.

PCC Partnerships include: Pratt/Cowley Nursing Cooperative; Coffeyville Community College Partnership; Wichita Area Technical College Partnership; Fort Hays State University 2+2 Program.



We've got you covered!



We've got you covered!

Electrical Power Technology offers a year-long Job Certification to all students who successfully complete the program. Students are admitted on a first come first serve basis because it regularly reaches occupancy.

Class sessions will be offered at the **WATC Grove Campus is 301 South Grove** and hands-on training will be offered at the **Westar Ripley Training Center**, 4400 North Seneca.

Students are required to come for a campus tour at Pratt's site before being able to enroll at a Beaver Building Day.



While in the program students will:

- Climb Poles Daily in all Weather Conditions
- Learn Safety Procedures
- Learn Electrical Theory
- Attend Hotline School
- Learn Basic Line Construction
 - Transformer Hook-ups
- Get Exposure to Underground Installation
 - Get exposure to Digger Derrick Operations

CDL training qualified students can train and take CDL drivers test and become certified in First Aid and CPR.



"I really like how Lane and Dave teach because they make it feel like a work environment everyday. It really helped me prepare to get a job."

**- Zachary Brouhard
2014 Graduate**



To be accepted into the EPT program, students must:

- Apply for admissions
- Come on a campus tour at Pratt to meet with our advisors

**348 NE SR 61
Pratt, KS 67124
(620) 450-2271**

To setup an appointment to visit please contact:

**348 NE SR 61
Pratt, KS 67124
(620) 450-2425**

All photos in this brochure were taken at Wichita's two locations.

