



**CONTACT INFORMATION**

348 NE SR 61  
Pratt, KS 67124  
(620) 672-5641



7920 West Kellogg  
Suite # 105  
Wichita, KS 67209  
(316) 927-3781



Schedule a visit today!

[www.prattcc.edu](http://www.prattcc.edu)

# PRATT Community College

**Electrical Power  
Technology**  
In association with  
Westar Energy in Wichita

Pratt Community College offers one of the most comprehensive Electrical Power Technology Programs in the nation. One of only three in the state of Kansas, it offers students a variety of convenient ways to attend classes through on campus courses, distance education and on the job training. The program is offered at three locations: Pratt, Coffeyville and Wichita.

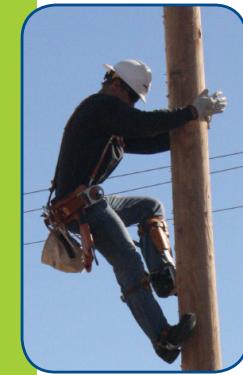
The EPT Programs have a 95 percent placement rating. Students are required to take part in a paid internship during the summer, which the instructors will help the students find one suited for them.

Pratt Community College is a comprehensive community college, providing general education as well as technical education and business and industry training. Students can transfer to a 4-year university or enter the workforce upon graduation.

Pratt's main campus is 70 miles west of Wichita located in Pratt, Kan. It was founded in 1938. PCC has an eLearning Center located in Wichita and offers general services and online courses.

PCC Partnerships include: Pratt/Cowley Nursing Cooperative; Barton County Community College Partnership; Coffeyville Community College Partnership; Dodge City Community College Partnership; Westar Energy.

**EXPERIENCE**  
The Pratt Difference



**Learn from the Best. Experience the Difference. People. Programs. Service.**



Electrical Power Technology offers a year-long Job Certification to all students who complete the program. Students are admitted on a first come first serve basis because it regularly reaches occupancy.

Class sessions will be offered at the **WATC National Center for Aviation Training (NCAT)**, 4004 N. Webb Rd and pole training will be offered at the **Westar Ripley Training Center**, 4400 North Seneca. Classroom sessions will be live via internet from the Pratt Community College main campus.

Students are required to interview for a spot in the classes, at which time they may pre-enroll for their classes next fall.



While in the program students will:

- Climb Poles Daily in all Weather Conditions
  - Learn Safety Procedures
  - Learn Electrical Theory
  - Go to Hotline School
- Learn Basic Line Construction
  - Transformer Hook-ups
- Get Exposure to Underground Installation
- Receive Trencher/Backhoe Training
- Get exposure to Digger Derrick Operations

Students have the opportunity to receive a Commercial Drivers Licence (CDL) and become certified in First Aid and CPR.



**"I have learned a lot through Pratt's EPT Program. I am excited to take what I learned in the classroom and on the field with me to my job."**  
- Martin Herrera  
Sophomore



To be accepted into the EPT program, students must:

- Apply for admissions
- Meet with the advisor
- Pay a deposit

For more information or to enroll please contact:

**Pratt Campus:  
348 NE SR 61  
Pratt, KS 67124  
(620) 672-5641**

**National Center for Aviation  
Training:  
4004 N. Webb Rd  
Wichita, KS 67226  
(316) 677-9400**