



**CONTACT INFORMATION** prattcc.edu  
Pratt Wichita Winfield Coffeyville  
348 NE SR 61; Pratt, KS 67124  
620.672.5641  
1.800.794.3091 (KS only)



**PRATT**   
**Community College**

**Electrical  
Technology  
Program**

## In-Demand Profession

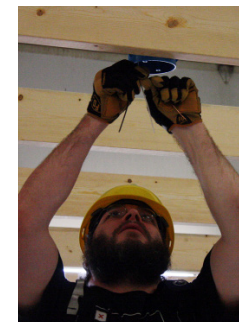
Electricians are always in demand in a growing economy. Since 1930, the U.S. has steadily increased its use of electrical power, and the trend will continue well in the next century. This increase creates a growing demand for individuals who are trained and possess skills which will qualify them for employment in the exciting field of Electrical Technology.

**Jobs: Electrician (Residential and Commercial); Industrial Maintenance; Construction; Cable Technology; and Phone Technology.**

Pratt Community College is a comprehensive community college, providing general education as well as technical education and business and industry training. Students can transfer to a 4-year university or enter the workforce upon graduation.

Pratt's main campus is 70 miles west of Wichita located in Pratt, Kan. It was founded in 1938. PCC has an eLearning Center located in Wichita and offers general services and online courses.

PCC Partnerships include: Pratt/Cowley Nursing Cooperative; Coffeyville Community College Partnership; Wichita Area Technical College Partnership; Fort Hays State University 2+2 Program.



**We've got you covered!**



# We've got you covered!

## Program Information

The Electrical Technology Program prepares individuals for a career in a variety of areas including residential, commercial, industrial wiring and plant maintenance. Electricity is essential for light, power, air conditioning and refrigeration. Electricians install, connect, test and maintain electrical systems for a variety of purposes, including climate control, security and communications. They may also install and maintain the electric controls used for machines in business and industry.

New technologies are expected to continue to stimulate the demand for electricians. Increasingly buildings will be pre-wired during construction to accommodate the use of computers and telecommunications equipment.

## Recommended Courses

<b>ELE125</b>	<b>Print Reading</b>
<b>ELE145</b>	<b>Residential Wiring</b>
<b>ELE135</b>	<b>National Electric Code</b>
<b>ELE129</b>	<b>DC/AC Circuits</b>
<b>ELE108</b>	<b>OSHA Construction Safety</b>
<b>ELE245</b>	<b>Commercial Wiring</b>
<b>ELEC255</b>	<b>Motor Controls</b>
<b>ELEC229</b>	<b>Electronics for Electricians</b>
<b>ELE155</b>	<b>AC/DC Electric Motors</b>
<b>ELE235</b>	<b>National Electric Code II</b>
<b>ELE250</b>	<b>HVAC Electrical</b>

**The total number of major specific hours totals 47 credit hours.**



## Materials Needed

Scientific Calculator  
Pencils  
Six inch rule  
3 Ring Binder with dividers  
Ruled Paper

## Tools Needed

A full list of tools will be provided before the classes begin. Each student is required to purchase their own tools for the program and the approximate cost will be \$250.

