



Pratt Community College
Monthly Newsletter

The

The official newsletter of PCC

BEAVER

August 2022

Buzz

Maximum Student Learning

Individual & Workforce
Development

High Quality Instruction
& Service

Community Enrichment

Call for upcoming newsletter content

If you have information, ideas for new content, fun facts, or PCC trivia, send them to Audra for inclusion in the next newsletter.

>>> audrar@prattcc.edu

Contents

Important Dates	2
Move-In Day Info	3-4
New Student Info Session	5
Student Life News	6
Performing Arts Encore Camp	7
BCC Nursing Partnership	8
Electrical Power Tech News	9
Dennis Lesh Awards Correction	10
Beaver Bites Menu 22-23	11-12
Scholarships at PCC	13
Mental Health Minute	14
Celebrate Diversity	15
Beaver Sports Academic Awards	16-17
Athletics Digital Ticketing Info	18
New Softball Coach	19
Cheer Car Wash	20
Beaver Backers Golf Tournament	21
We're Hiring	22

Upcoming Dates

Faculty In-Service and Prep	8/8-8/12
Residence Hall Move-In Day	8/14
Registration Days	8/15-8/16
New Student Info Session	8/16
First Day of Fall Classes	8/17
Public Budget Hearing & Board Meeting	8/22

See next page for more important dates!

PCC Move-In Day August 14, 2022

We are excited to welcome students back to PCC! It's going to be a great year!

Students new to PCC will move in from 9am-1pm.
Students returning to PCC will move in from 1pm-4pm.

Taking care of financials and other needed paperwork will help things go more smoothly, please note the important contact information below, and see more details and a map on page 3!

Residence Life

residencelife@prattcc.edu
620-450-2170

Admissions

pccadmissions@prattcc.edu
620-450-2117

Financial Aid

finaid@prattcc.edu
620-450-2247

Registrar

registrar@prattcc.edu
620-450-2221

Business Office

businessoffice@prattcc.edu
620-450-2143

Bookstore

krystala@prattcc.edu
620-450-2176

WELCOME BACK *Students!*



#BEAVERNATION

#DAMGOODFUTURE

AUGUST

IMPORTANT DATES

Faculty In-Service and Preparation
August 8-12

State of the College Address
August 8

Residence Hall Check-In/Move-In Day
New to PCC 9am-1pm Returning to PCC 1pm-4pm
August 14

Registration Days
August 15 & 16, 9am-5pm

New Student Information Session
August 16 @1:30pm

Fall Semester Classes Begin
August 17

Board of Trustees Meeting - Riney Student Center
August 22 @6pm

SEPTEMBER

A LOOK AHEAD

Labor Day, No Classes - Campus Closed
September 5

Certification Date for full-semester classes
September 5

Rodeo at Colby
September 16, 17, 18

Board of Trustees Meeting - Riney Student Center
September 19

Performing Arts Showcase
September 18 @2:30pm

For more upcoming dates and information,
visit prattcc.edu/calendar



SUNDAY, AUGUST 14

RESIDENCE HALL CHECK-IN

Sunday, August 14th between 9am and 4pm.

CHECK-IN TIMES

New PCC Students: 9am-1pm
Returning PCC Students: 1pm-4pm

STUDENTS MUST FOLLOW THE CHECK-IN SCHEDULE OUTLINE ABOVE.

GUESTS

Students may bring up to four guests with them to assist with moving into their residence hall.

IMPORTANT CONTACTS:

RESIDENCE LIFE:

residencelife@prattcc.edu
620-450-2170

FINANCIAL AID:

620-450-2247

BUSINESS OFFICE:

620-450-2143

ADMISSIONS:

620-450-2217

WHAT'S THE PLAN?

STEP 1

Enter at the south entrance of HWY 61 and look for the "Beaver Check-In" sign near the Welcome tent.

STEP 2

You will be guided to one of the two check-in stations located in the south parking lot.

STEP 3

Check-in staff will direct you to your residence hall (if financials are complete) or to park and proceed inside if you have incomplete financials.

PREPARE YOURSELF

Having complete financials will make your day seamless! Check your E-Central account for any documents needing completed and set up a Payment Plan for any leftover balance!

Contact Admissions prior to arriving if you have questions or concerns about finalizing your status.

New Student INFORMATION SESSION



TUESDAY.AUG. 16 • 1:30PM

• DENNIS LESH ARENA

INFO • PRIZES • GAMES • ICE BREAKERS



**REQUIRED OF ALL DEGREE-SEEKING,
NEW TO PCC INCOMING STUDENTS ENROLLED IN 12 HOURS
OR MORE FOR FALL 2022**



New Equipment at Porter Hall

The Student Life and Residence Life departments at PCC have been hard at work planning activities for students. Resident Assistants will begin their procedural and safety trainings the week before Move-In Day.

In addition to routine cleaning and maintenance over the summer, a number of improvements have been made on campus. Kenny McCartney, the Assistant Director of Residence Life, is a recent graduate of PCC and revealed a number of additions to residence halls.

"One of the improvements we are excited about is in Porter Hall. We have a Brand New Pool Table, Ping Pong Table and an Air Hockey Table. We set up a 70" TV and added an Xbox Series S with many game favorites. These changes are most exciting because all of our hall students on campus have access to the Porter Hall Lobby."

A fire pit was also just added to the concrete patio area of Wojchiehowski Hall.

Student Life activities give students a chance to socialize and have fun in a variety of ways in order to be as inclusive as possible, and suit busy student schedules. It's great to see how students blossom from the first day of classes to the end of the year.

Activities are planned with a purpose and safety in mind, scheduled around and often promoting attendance at PCC athletic competitions. Several of the events also include great door prizes. A Student Life Activities Calendar will be distributed to students during the first week of classes and every month thereafter.

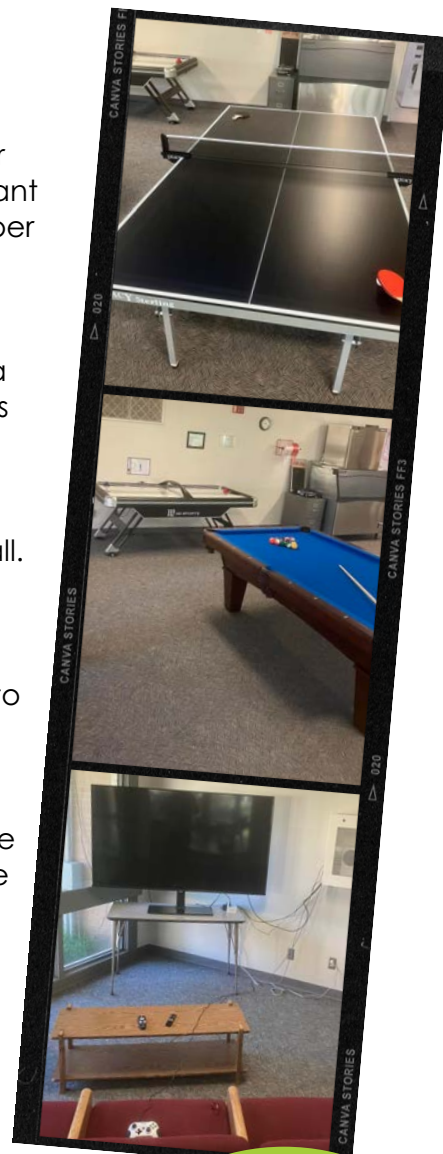
Visit our [Student Life page](#) to learn more and fill out the suggestion box!



BRAD LUTHE

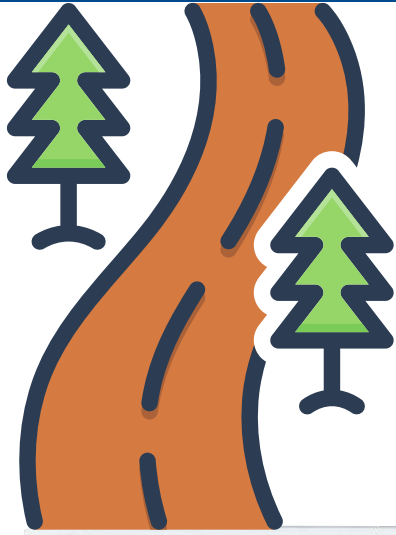
Director of Students and Residence Life
Pratt Community College
348 NE SR 61
Pratt, KS 67124
Office: 620-450-2170
Cell: 620-450-7435

KENNY MCCARTNEY
Assistant Director of Residence Life
Pratt Community College
348 NE SR 61
Pratt, KS 67124
Office: 620-450-2120



PRATT COMMUNITY COLLEGE PERFORMING ARTS

Encore Camp



"This group is going to be amazing! We were blessed this year to have camp at **The Rut 'N Strut Lodge** right here in Pratt County! The lodges are beautiful, the setting was perfect and the kids had a great time singing, cooking, roasting marshmallows, chasing lizards, taking walks and just relaxing and getting to know each other. A great big thank you to Brandon Hendrix for allowing us to use the lodges. And another big thanks to my good friend Socorro Acosta for making our shirts! Pratt Community College Performing Arts is off to a great start!"

-Misty Beck, Performing Arts Instructor



Rut N Strut Lodge



PCC AND BARTON CC CELEBRATE PARTNERSHIP



Pratt CC President Dr. Michael Calvert and Barton CC President Dr. Carl Heilman did an official signing to celebrate the Nursing partnership with BCC to offer the Associate Degree of Nursing (ADN) program on the Pratt campus starting this fall.

The reception included comments from presidents, trustees and Nursing educators, collectively. Barton educators were also on hand to give tours of the nursing lab facilities.

Students are officially enrolled to begin training in Pratt this semester, and the process to potentially add Licensed Practical Nursing (LPN) training in the future with Barton Community College is in progress.

We look forward to offering the much-needed training for healthcare professionals in the Pratt area through this partnership!



PRATT COMMUNITY COLLEGE ELECTRICAL POWER TECHNOLOGY

KSN's 'Good Day Kansas' Show Visits Electrical Power Technolgy (EPT) Program

KSN's Good Day Kansas crew out of Wichita visited the Electrical Power Technology (EPT) facility on campus.

EPT Director Phillip "Dave" Campbell spoke about the new [EPT Support Specialist](#) major that trains students on the ground, versus training aloft in the lineman training program.

The Support Specialist major gives an overall view and training foundation that could lead to a job in six other occupations in electrical distribution that **do not include climbing**.

Host Jillian Carroll attempted a pole climb with instruction from EPT instructor Jeff Hoffman. Check out the video segment that aired on KSN NewsChannel 3 in July to see how it went!

[Watch the video clip:](#)



KSN.COM
Pratt Community College's New EPT Program
Pratt Community College offers one of the most comprehensive Electrical Power Lineman Prog...



EPTSS trains on the ground in 6 possible career pathways:

- Warehouse & Stores
- System Control
- Substation Technician
- Underground System Crewman
- Overhead System Groundman
- Customer Service

Learn more about each of the career pathways within our new EPTSS major at prattcc.edu/ept and contact EPTAdmissions@prattcc.edu if you're interested in applying!



PCC Announces Recognition Awards

During the 2022 Commencement Ceremonies, Pratt Community College announced the winners of the Dennis Lesh Food Service Award, Teacher Recognition Award, and Staff Award. These awards are given based on nominations from PCC students and employees. PCC honors their commitment and quality service to the college. Congratulations!

Christina Mireles



Food Service Award

Brad Herndon



Teacher Recognition

Leah Patterson



Staff Award



PRATT COMMUNITY COLLEGE

BEAVER BITES

FULL MENU

BEAVER BITES HOURS

MONDAY - FRIDAY

9AM - 2PM

*Hours subject to change based on season

BREAKFAST (UNTIL 10:30AM)

Breakfast Sandwich	\$4.50	Add Ons	
Pancakes (2)	\$4.50	Cheese	\$0.75
Pancakes/Sausage	\$5.50	Chili	\$0.75
Ham/Cheese Omelet	\$4.50	Bacon	\$1.00
Deluxe Omelet	\$5.50	Egg	\$1.10
Breakfast Burrito	\$4.50	Jalapenos	\$0.50
Breakfast Bowl	\$6.00	Mushrooms	\$0.50
Scrambled Eggs/Bacon	\$4.50	Salsa	\$0.75
Biscuits and Gravy	\$4.50	Syrup	\$0.75
Toast	\$1.00	Guacamole	\$1.00
		Pineapple	\$1.00
		Sausage	\$1.00

ORDER ANY COMBO AND UPSIZE YOUR DRINK FOR .25 CENTS!

LUNCH

SANDWICHES

Ham and Cheese	\$5.00
Turkey and Cheese	\$5.00
Grilled Chicken	\$4.50
Grilled Chicken/Bacon	\$5.00
BLT	\$5.00
Crispy Chicken Sandwich	\$4.00
Grilled Cheese	\$3.50
Chicken Salad Sandwich	\$4.00
Chicken Strip Sandwich	\$5.50
Combo (Fries/Med. Drink)	\$1.50

QUESADILLAS

Cheese	\$3.50
Fried Chicken	\$5.00
Chicken/Cheese	\$5.00
Deluxe (Pepper, Onion, Tomato)	\$5.50

HOT DOG

Plain Hot Dog	\$4.00
Chili Cheese Dog	\$5.50
Combo (Fries/Med. Drink)	\$2.00

SALADS

Chef Salad	\$5.00
Fried Chicken Salad	\$6.00
Grilled Chicken Salad	\$6.00
Side Salad	\$3.50

Dressings: Ranch, Italian, Blue Cheese, Dorothy Lynch, Honey Mustard, Caesar, Thousand Island \$0.75

WRAPS

Chicken (Fried/Grilled)	\$6.00
Ham and Cheese	\$6.00
Turkey and Cheese	\$6.00
Southwest Chicken	\$6.00
Southwest Turkey	\$6.00
(Cold Wraps)	\$4.00
(Wraps come with your choice of Ranch, Mayo, Cheese, Lettuce, Tomato, Onion and Pickle)	
Combo (Fries/Med. Drink)	\$1.50

CHEESEBURGERS

Regular	\$5.50
Jalapeno Cheeseburger	\$6.50
Bacon Cheeseburger	\$6.00
Double Cheeseburger	\$7.50
Hawaiian Cheeseburger	\$6.50
Combo (Fries/Med. Drink)	\$2.00

CHICKEN STRIPS (3)

Combo (Fries/Med. Drink)	\$6.75
--------------------------	--------

Sauces: Ranch, BBQ, Honey Mustard

EGG ROLLS

Single Egg Roll	\$1.75
3 count	\$4.50

LOCATED INSIDE DENNIS LESH ARENA
CALL TO PLACE ORDER! 620-450-2555

BEAVER BITES

HOURS
MONDAY - FRIDAY 9AM-2PM
*Hours subject to change based on season

CONCESSIONS

Soft Pretzel w/ Cheese	\$3.50
Chili Pie	\$3.25
Nachos	\$3.00
Fried Pickles	\$3.00
French Fries	\$2.50
Tater Tots	\$2.50
Small Popcorn	\$1.50
Large Popcorn	\$3.00
Popcorn Combo (Med. Drink)	\$4.00
Assorted Candy	\$1.25
Muffins	\$1.00
Slim Jim	\$0.30

DRINKS

Small/Medium Soft Drink/Tea	\$1.25
Large Soft Drink/Tea	\$1.50
Bottled Water	\$1.75
Bottled Juice	\$2.00
Coffee (K Cup)	\$1.25
Slush	\$2.50
Cappuccino	\$2.00
Hot Chocolate	\$2.00
Powerade	\$2.00
Energy Drinks	\$3.00
Ice Coffee	\$2.75
Bottled Sweet Tea	\$2.00
Milk	\$2.00
Refills	\$0.55

New!

ICE CREAM

(ASSORTED PRICING)

Fresh Fruit	\$1.00
Yogurt	\$1.00
Cheese Sticks (3)	\$3.50
Crackers	\$0.75

**ORDER ANY
COMBO AND
UPSIZE YOUR
DRINK FOR
.25 CENTS!**

Ask about our new Beaver Bites
Membership Card!



CALL TO PLACE ORDER!
620-450-2555

PRATT COMMUNITY COLLEGE

07/2022

BEAVER BITES



SCHOLARSHIPS

at PCC

APPLY NOW

ACADEMIC AND DEPARTMENTAL

- Agriculture
- Agriculture Power Technology
- Art
- Liberal Arts
- Auto Technology
- Biology/Science
- Business/Accounting
- Education
- Electrical Power Technology
- Information Network Technology
- Skyland Grain
- Welding Technology
- Wildlife Outfitting & Operations

ATHLETIC AND ACTIVITY

- Basketball (Men's and Women's)
- Baseball
- Cheer
- Cross Country
- eSports
- Rodeo
- Soccer (Mens and Women's)
- Softball
- Tennis (Men's and Women's)
- Track and Field
- Volleyball
- Wrestling
- Flag Football
- Performing Arts
- Shooting Sports

KANSAS RESIDENTS

- [Presidential Above and Beyond Scholarship](#)
- [Kansas Promise Scholarship](#)

PRATT COUNTY SENIORS

- [Pratt County Senior Grant Level 1](#)
- [Pratt County Senior Grant Level 2](#)

HIGH SCHOOL STUDENTS

- [Earn As You Learn Scholarship](#)

FOUNDATION

[PCC Foundation Scholarships](#) are awarded to new and continuing students based on academic excellence, leadership, intended major of study, service, talent, financial need, and any criteria required by the scholarship donor. These scholarships are not applied for, but selected based on criteria.

TRANSFER

[PCC Transfer Scholarships](#) are endowed funds set up for graduating students who intend to continue their education. A variety of scholarships are available. Transfer Scholarships applications are available during the Spring semester each year to graduating students through the eCentral portal.

OTHER SCHOLARSHIPS

- Bonnie Dudrey Memorial Scholarship
- Faculty Scholarship

07/2022

Learn more on our website:
prattcc.edu/scholarships

*Scholarship information is subject to change

MENTAL HEALTH MINUTE



The Power of 'Hello'

This is a simple idea, really: remind yourself daily to say hello. To the person in the seat next to you in the classroom, to the teacher you walk past in the hallway, to the teammate sitting on the bench waiting for practice to start. Say hello.

One thing to remember though is not to confuse simple with unimportant. Behavioral researchers have found that it is through little things -like saying 'hello'- that make a big difference in terms of our social interactions. For example, data even confirms that smiling is contagious. So is simply saying 'hello'.

But we often do not even do that. We walk around campus, most of us with a lot going on – whether that be around us or in our own minds. We think about things we have going on, due dates for assignments or upcoming tests, what a text that we sent or got sent to us meant, or what is going on in the social media world we are missing.

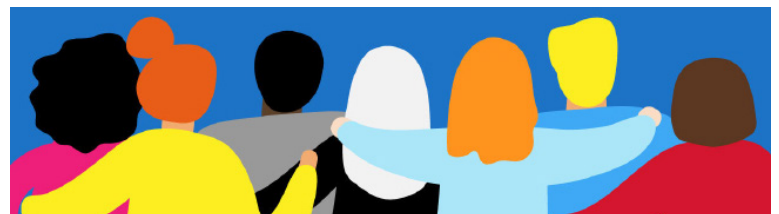
Behavioral researchers have even studied this tendency, termed stimulus overload, which is this idea that the environment around us is constantly throwing us more and more information.

Even just to accomplish a daily goal, we have to learn how to block out some of the stimuli being thrown at us, so we put on blinders to conserve our mental fortitude and try to focus on one task at a time.

While that in and of itself is a good practice, it also takes over some of those simple things like smiling or saying 'hello'. Those blinders make us less aware of what is going on around us and leaves us, ultimately, less connected to those around us on campus or in the community at large. And that, even unintentionally, sends a message to others.

I'll leave this short monthly minute with this thought from Sam Sommers, a social psychologist: "Happiness isn't a prerequisite for smiling; sometimes smiling is what makes you happier. By the same token, remind yourself to say hello and you actually contribute to a friendlier and more inclusive climate."

My challenge for the year to us all – students, staff, faculty, administration –is to make sure to say 'hello'.



Amanda Wade
Licensed Professional Counselor

To schedule an appointment, email Amanda Wade at amandaw@prattcc.edu or call 620-450-2263.

PRATT COMMUNITY COLLEGE

CELEBRATE DIVERSITY TEAM

International Day of the World's Indigenous Peoples August 9, 2022

On December 23, 1994, the United Nations General Assembly decided, in its resolution 49/214, that the International Day of the World's Indigenous People shall be observed on August 9 every year. The date marks the day of the first meeting, in 1982, of the UN Working Group on Indigenous Populations.

On this day, people from around the world are encouraged to spread the UN's message on the protection and promotion of the rights of indigenous peoples.

Events at the UN headquarters in New York include messages from high-level UN officials, governments, indigenous peoples and other key leaders; performances by indigenous artists; and panel discussions on emerging issues. Other events are also held worldwide to celebrate the day.

The UN General Assembly had proclaimed 1993 the International Year of the World's Indigenous People, and the same year, the Assembly proclaimed the International Decade of the World's Indigenous People, starting on 10 December 1994 (resolution 48/163).

The goal of the First International Decade was to strengthen international cooperation for solving problems faced by indigenous people in such areas as human rights, the environment, development, education and health. The Second International Decade of the World's Indigenous People was from 2005 to 2015.

In 1990, the International Conference on Discrimination Against Indigenous Populations in the Americas, sponsored by the United Nations, began to discuss replacing Columbus Day with Indigenous Peoples' Day.

California and Tennessee observe Native American Day in September, not conflicting with Columbus Day.

"For over 500 years, Indigenous people have been fighting for their survival, land and rights," Les Begay, a Diné Nation member and co-founder of the Indigenous Peoples' Day Coalition of Illinois, said at a rally in Chicago. "Each October, when Columbus is honored, it further diminishes and erases Native people, their history and their culture."

Over a dozen states and more than 130 local governments have chosen to not celebrate Columbus Day altogether or replace it with Indigenous Peoples' Day. Many states celebrate both. Eleven U.S. states celebrate Indigenous Peoples' Day or a holiday of a similar name via proclamation, while 10 others treat it as an official holiday. The 10 states that observe the holiday via proclamation are Arizona, California, Iowa, Louisiana, Michigan, Minnesota, Nevada, North Carolina, Virginia, Wisconsin, plus Washington, D.C.

And the 10 that officially celebrate it are Alabama, Alaska, Hawaii, Maine, Nebraska, New Mexico, Oklahoma, Oregon, South Dakota and Vermont.

Some tribal groups in Oklahoma celebrate Native American Day in lieu of Columbus Day, with some groups naming the day in honor of their individual tribes.

More than 100 cities have replaced Columbus Day with Indigenous Peoples' Day, including Seattle, Los Angeles, Boston, Denver, Phoenix and San Francisco.

Source: United Nations <https://www.un.org/development/desa/indigenouspeoples/international-day-of-the-worlds-indigenous-peoples.html> USA Today: <https://www.usatoday.com/story/news/nation/2021/10/11/indigenous-peoples-day-everything-you-need-know-holiday/6087138001/>

Join Us!

CELEBRATE DIVERSITY TEAM

EDUCATION | RESPECT
VALUE | CULTURE

Contact Lisa Perez-Miller at
lisam@prattcc.edu for more information.

Pratt Community College

BEAVER ATHLETICS

2021-2022

Visit gobeaversports.com for schedules, rosters, statistics and more!



NJCAA Announces 2021-2022 Academic Teams of the Year and All-Academic Teams



2021-22 NJCAA WRESTLING ACADEMIC TEAM OF THE YEAR

Pratt, Kan. – The National Junior College Athletic Association (NJCAA) announced the 2021-22 NJCAA Academic Teams of the Year and the NJCAA All-Academic Teams. Pratt Community College (PCC) had seven athletic teams recognized with 50 student-athletes being honored as well.

The Wrestling team was named the 2021-22 NJCAA Wrestling Academic Team of the Year with a team grade point average of 3.49.

The teams who were recognized include Baseball (3.16 GPA), Women's Basketball (3.32 GPA), Women's Soccer (3.28 GPA), Men's Tennis (3.46 GPA), Softball (3.19 GPA) and Volleyball (3.21 GPA).

In addition to honoring teams every summer, the NJCAA honors student athletes in three different All-Academic Teams. Student-athletes are eligible to earn academic honors by achieving an overall GPA of 3.60 or higher for the 2021-22 academic year.

See the individual honors on the next page!

Continued...

NJCAA All-Academic First Team (4.00 GPA)

1. Benjamin Burroughs (Baseball)
2. Kawana Dias Dos Santos (Women's Basketball)
3. Gavin Djurovic (Baseball)
4. Kylie Hefling (Volleyball)
5. Grace Hendrickson (Women's Basketball, Volleyball)
6. Guilherme Ribeiro (Men's Soccer)
7. Brayden Ketley (Baseball)
8. Scott Radke (Wrestling)
9. Tamara Radovanov (Volleyball)
10. Natalia Richartz (Women's Soccer)
11. Alaina Strickland (Women's Soccer)
12. Quin Tocheniuk (Baseball)

NJCAA All-Academic Second Team (3.80-3.99 GPA)

1. Kai Allen (Wrestling)
2. Derek Drees (Cross Country, Half Marathon)
3. Adolfo Mendoza (Wrestling)
4. Deston Miller (Wrestling)
5. Nathaniel Moore (Men's Tennis)
6. Ethan Paris (Cross Country, Half Marathon)
7. Alexa Puerto (Women's Soccer)
8. Maris Quillen (Women's Soccer)
9. Bryant Sevadjan (Baseball)
10. Andile Sibanda (Men's Tennis)
11. Cayden Winter (Wrestling)

NJCAA All-Academic Third Team (3.60-3.79 GPA)

1. Svenja Arnold (Women's Soccer)
2. David Arrieta (Men's Tennis)
3. Faith Bannister (Softball)
4. Sierra Bryant (Women's Soccer)
5. Chariah Daniels (Women's Basketball)
6. Brent Escareno (Wrestling)
7. Jessi Ferneau (Women's Soccer)
8. Tyler Gates (Baseball)
9. Maxime Guyon (Men's Tennis)
10. Nikolas Highsmith (Men's Soccer)
11. Jace Jenkins (Baseball)
12. Karolina Juresiute (Women's Basketball)
13. Enrique Lankford (Men's Basketball)
14. Braydon Lemuz (Wrestling)
15. Jacob Mitchell (Wrestling)
16. Morgan Pitts (Softball)
17. Dayton Porsch (Wrestling)
18. Moises Rodriguez (Wrestling)
19. Mitchell Smith (Baseball)
20. Ruth Sodipe (Women's Basketball)
21. Clayton Stephenson (Wrestling)
22. Brooke Tholen (Volleyball)
23. Collin Turley (Indoor Track & Field, Outdoor Track & Field)
24. Cassandra Wedel (Softball)
25. Jaylon Wiltz (Men's Basketball)
26. Payton Woody (Softball)

"We are extremely pleased and proud of all our athletic programs and especially proud of those who achieved Academic Team of the Year nominations. To have seven programs recognized is tremendous and a tribute to our coaches, faculty and staff who have worked hard with our student-athletes," said Athletic Director Tim Swartzendruber. "Our wrestling team was the Academic Team of the Year. Special congratulation to Coach Kepley and the wrestlers for this achievement!"

"I am also thrilled to say we had 50 individuals throughout our athletic programs who qualified to be an Academic All-American," said Swartzendruber. "In order to achieve this honor, an individual must have a 3.6 or higher grade-point average. This is certainly an honor for those individuals and we are extremely proud of them!"

2021-22 NJCAA ACADEMIC TEAMS OF THE YEAR



MEN'S TENNIS / 3.46 GPA

2021-22 NJCAA ACADEMIC TEAMS OF THE YEAR



WOMEN'S BASKETBALL / 3.32 GPA

2021-22 NJCAA ACADEMIC TEAMS OF THE YEAR



SOFTBALL / 3.19 GPA

2021-22 NJCAA ACADEMIC TEAMS OF THE YEAR



VOLLEYBALL / 3.21 GPA

2021-22 NJCAA ACADEMIC TEAMS OF THE YEAR



WOMEN'S SOCCER / 3.28 GPA

2021-22 NJCAA ACADEMIC TEAMS OF THE YEAR



BASEBALL / 3.16 GPA

TICKETS ON SALE NOW!

<https://gobeaversports.com/information/Tickets>



Tickets for all Fall 2022 Athletic events are now on sale as well as season passes!!

We are moving to digital ticketing in the PCC Athletic Department and you can purchase tickets by visiting:

<https://www.gobeaversports.com/information/Tickets>

#DefendthDam



SOFTBALL

Joely Rogers Named Head Softball Coach



Pratt, Kan. – Pratt Community College (PCC) is excited to announce the hiring of Joely Rogers as the next Head Softball Coach. Coach Rogers started on campus Monday, July 11 and is already busy recruiting for the fall semester.

“We are thrilled to have Joely Rogers join our coaching staff. We had a strong pool of applicants and Coach Rogers rose to the top quickly based on her past experience playing in the Jayhawk Conference, as well as coaching at Independence and Coffeyville,” said Athletic Director Tim Swartzendruber. “I love her energy and enthusiasm. I believe Pratt softball is in great hands!”

Coach Rogers comes to Beaver Nation after serving as a Softball Recruiting Coach for the Next College Student Athlete (NCSA) since April of this year. Her role was to assist student athletes and their families in the recruiting process. Before joining NCSA, she served as the Assistant Softball Coach at Northwestern Oklahoma State University (NOSU) in Alva, OK from November 2021-April 2022. She also served as Assistant Softball Coach at Oklahoma Wesleyan University (OWU) for a short period of time in 2021.

“I am so excited to be the new head coach at Pratt. It’s such a fantastic opportunity to be able to work with the community, great facilities, and the staff here,” said Coach Rogers. “A new era of Pratt Softball is on the horizon. Go Beavers!”

Rogers got her start in coaching at Independence Community College (ICC) as the Assistant Softball Coach from July 2017-May 2018. After just one season in Indy, she moved on to her alma mater Coffeyville Community College (CCC) where she served as Assistant Softball Coach from June 2018-May 2021. Her duties included recruiting coordinator, pitching coach, and serving as Interim Head Coach from April-May 2021.

As a player, Rogers played from 2013-16 at Coffeyville where she was named Academic All-American in 2013. After Coffeyville, she transferred to the University of Central Oklahoma (UCO) from 2013-16. Coach Rogers is currently finishing her Masters Degree in Sports Administration, Health PE Sports Sciences from Arkansas State University.

Follow all the latest news in Beaver Athletics at GoBeaverSports.com





Pratt Cheer Holds Car Wash at PCC



Pratt Cheer was one of the first PCC athletic teams to arrive on campus to start training. In addition to camp, the Cheer squad held a fundraising car wash in the Benson Education Center parking lot on campus.

The team headed to Northwest Missouri State University shortly thereafter to seal their bid to Nationals in Daytona.

Per the Pratt Community College Cheer Facebook page:

"Your beavers have been hard at work the last few days! We are coming home from camp with...

GAME DAY

RALLY ROUTINE

SILVER PAID BID TO NATIONALS!

The work doesn't stop here. See you soon Daytona!"

#NLTR #TheWorkIsWorthIt #DefendTheDam #BeavUp #DamGoodFuture





BEAVER BACKERS

GOLE TOURNAMENT

FOUR PERSON SCRAMBLE

Saturday, August 20
Park Hills Country Club
337 Lake Road, Pratt KS



ENTRY FEE

\$100 per person/
\$400 per team
Includes: Continental
breakfast, lunch, cart,
green fees, range balls, golf
balls, tees and more

REGISTRATION

8:00 am to 8:30 am
Shotgun start at 8:30 am



PRIZES

Cash awards in each flight
Longest drive
Longest putt
Closest to the pin

We're Hiring!

AT PRATT COMMUNITY COLLEGE

OPEN POSITIONS:

- Administrative Assistant to Director of Athletics/Assistant Athletic Director
- Head Custodian
- Coordinator of Institutional Research & Effectiveness
- Women's Flag Football Coach/ Residential Supervisor
- Assistant Women's Basketball Coach/ Residential Supervisor
- Welding Instructor
- Marketing Communications & College Relations Specialist
- Assistant Athletic Trainer
- Bus Drivers
- Adjunct Instructor - Practical Nursing (PN) Program
- Clinical Adjunct Instructors--Allied Health

APPLY:

PRATTCC.EDU/EMPLOYMENT



If you have any questions, please contact the Director of Personnel, Pratt Community College, 348 NE SR 61, Pratt, KS 67124, 620.672.5641 ext. 139, Title IX/Section 504 Coordinator.

Pratt Community College is an employer of choice. Explore the opportunities of working at PCC. We currently employ over 150 individuals in a wide variety of fields. Our jobs include many faculty disciplines and a wide range of office, technical, professional, service, maintenance and managerial positions. View our current job opportunities online.